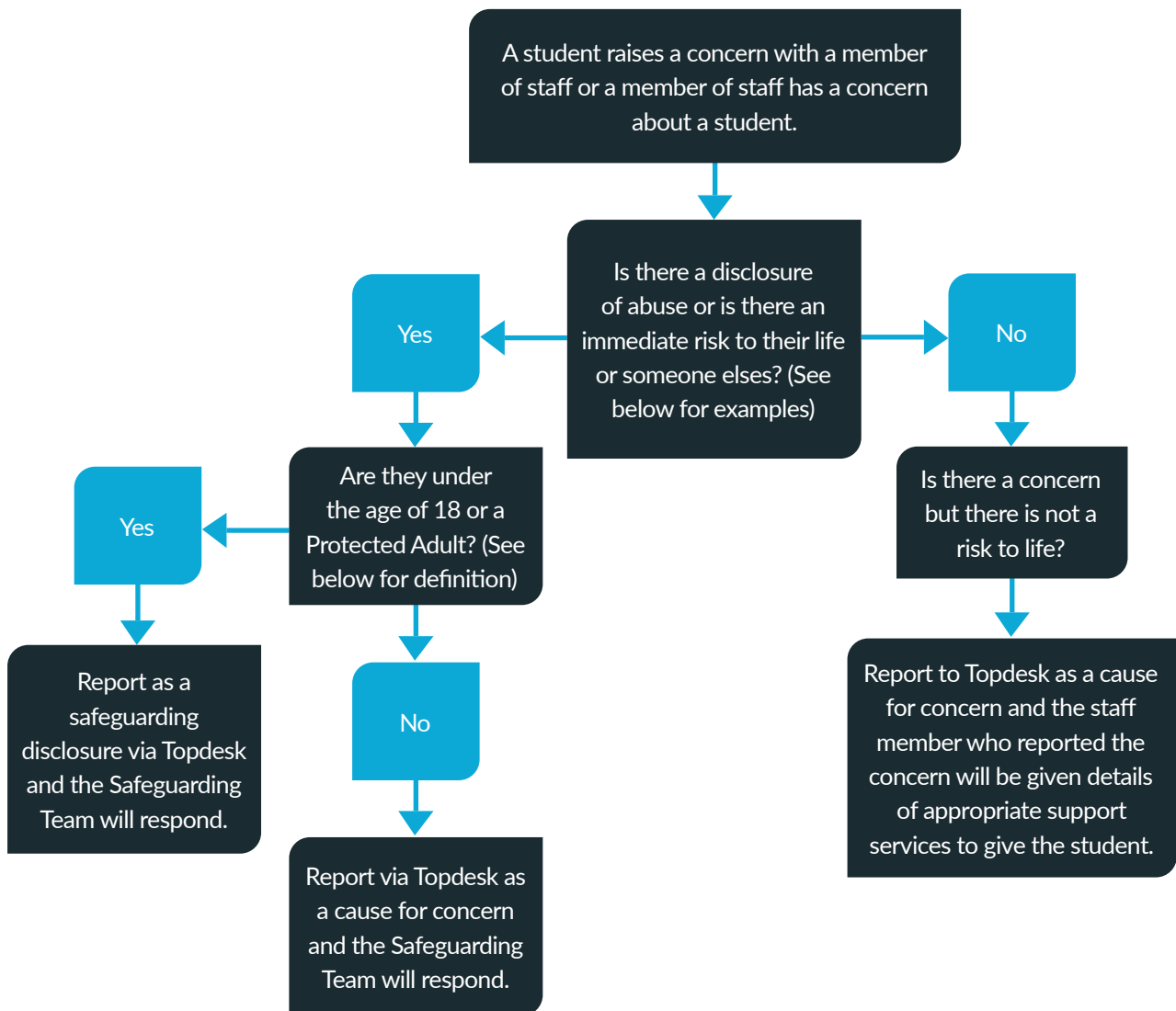




# SAFEGUARDING FLOWCHART



## References

- Examples of abuse - Physical, Emotional, Financial, Sexual and Neglect
- Risk to life - when someone has a suicide plan or is in the process of ending their life\*
- Risk to life by threatening violence in an emergency phone 999

\*For more information please refer to the Crisis Action Plan in the Student Mental Health and Wellbeing Policy Guidance for Staff

## A Protected Adult is defined as someone who is over 16 and

- is unable to safeguard themselves, their property, rights or other interests, and
- is at risk of harm, and
- because they are affected by disability, mental disorder, illness or physical or mental infirmity, are more vulnerable to being harmed by others who are not so affected

(Scottish Government)

This flowchart is one of the appendices in the safeguarding policy. This should be in all staff areas and offices. If not please contact - Kara McKenzie-Tait for a copy.